

NANAIMO QUILTERS GUILD



VOLUME 28 – ISSUE 8- APRIL 2012

www.islandquilters.ca

Editor sandrahreno@yahoo.ca

Submission **deadline** for Newsletter
no later than **22nd** of each month.

Next Meeting

April 18th 2012
Brechin United Church Doors
open at 12:30 & 6:30 meeting
starts at 1:00 & 7:00

Next Executive Meeting

April 2nd at 1:30pm Country
Grocer, Southgate.

Things to Remember:

- Your own cup !! please
- * name tag
- *Library Books
- *Completed workshop
registration form and fees
- * Donation
placemats/quilts/show and
share.
- *Change for raffles
- *Bock of the Month

Yummy Baking !!

Thanks to everyone who brings
goodies for our meetings For
April is - Q-R-S-T

Membership/ Hospitality

Please stop at the hospitality
table to sign in, and pick up your
ticket for the name tag draw..
You must be wearing your name
tag in order to win the draw.
Please sign out if you leave the
meeting early.

Web liason

Sue Creba **Please send any
photos or articles for our web
site to**
suecreba@aquariusD.com

From our PRESIDENTS PEN



Hi Ho, Hi Ho; it's off to work we go! You will have noticed in the last Newsletters, advertisements of job openings in the Guild. Norma Franks, our Past President, is seeking nominations and we do not want her standing alone on the floor facing a huge silence. Please assist her in stepping forward for these vacancies. Taking on positions makes your own guild experience much richer and enables you to know your fellow members at a deeper level. From the first year I joined, I was always a member of a committee and then a Chair, thus learning the mechanics of what makes the Guild work. Northern Flickers are hammering on our local chimney pots and light standards. They think it is spring, unlike myself who would really really like to get out into the garden to commence the winter clean-up.

Judith McLaughlin and Sherry Drebnicki, Co-Presidents

Food Bank submission for the April Newsletter.

Many thanks to all the members who brought both their January and February food donations to the February meeting, we had a great amount of food. I am going to make a slight change. We usually leave our donations on the freezer in the lower hall, but last month a church member needed to access the freezer and took our donations off the top, the driver from Loaves and Fishes could not find were they had been put and had to make two trips to pick them up. I am going to place the boxes on the left hand side of the stage in future so that we do not infringe on the access to the freezer.

Thanks for your support

Norma Franks

In Memory:

Beulah Friesen was a member of the Material Girls' Quilt Group. To honour her memory, we will be holding a tea on April 11th, from 1 - 3PM at St. Andrew's Presbyterian Church Hall on Departure Bay Rd., across from Wellington School.
Georgia of the Material Girls

NANAIMO QUILTERS GUILD

VOLUME 28 – ISSUE 8- APRIL 2012

www.islandquilters.ca



SERGE & SEW

250-390-3602

105 Nored Plaza, 6750 Island Hwy., Nanaimo

SEPTEMBER SPECIALS

- PFAFF Expression 2.0 with free Go Baby™
- PFAFF Expression 4.0 with free Tool Box
- Baby Lock Symphony with \$100 gift Certificate

Check our website www.sergesew.com

for EVENTS & SALES!

Authorized PFAFF & Baby Lock dealer
Servicing & repairs to most sewing machines & sergers.
Monday - Friday 10 - 5:30 Sat 10 - 5 Sundays closed

BIB N' TUCKERQUILTING

April Sale

All tone on tone **Purples**

All Tone on tone **Yellows**

25% off - 35% off 2m +

(same bolt) 1/2 m minimum cuts

Reminder: Open Easter Monday Regular hours 10 – 4pm Closed Sat. May 5th for Quilt show.

343 Bay Street (at Turner) Victoria, BC
(Lower Rear GRAVEL YARD parking lot)

250-386-6512 (Mon-Thurs 10-4, Sat 12-4)

Library News April 2012

It's hard to believe that we have only 2 more meetings left this year!

As you are doing your Spring cleaning please be on the look out for any library materials that you may have misplaced and bring them to the April meeting. We have several "orphan" magazines missing from the magazine bags....(returned with 2 magazines instead of 3) and books that seem to have been misplaced. We are also missing a few books. Just bring them back... no questions asked!

Reminder: May is the month when you get all your checked out materials until September. We would highly recommend that you renew your membership in the spring so we can keep better track of who has our library materials.

We may also have some library discard materials available for sale by donation. With smaller membership numbers this year, our circulation is down and our storage space is tight. We need to make room for the new materials.

Thank you Library Team

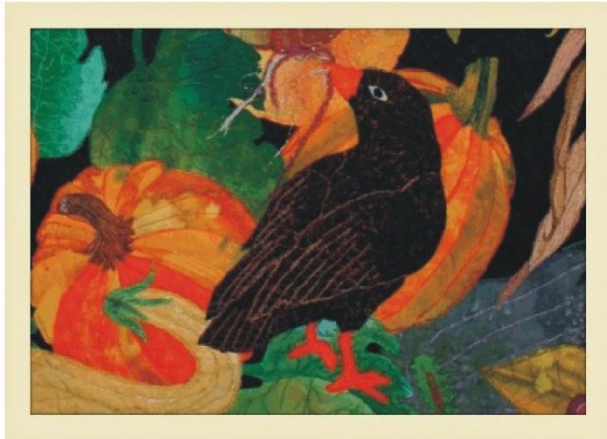
NANAIMO QUILTERS GUILD

VOLUME 28 – ISSUE 8- APRIL 2012

www.islandquilters.ca

Harvest Quilt Studio

Long Arm Quilt Services



Carol Bailey

by Appointment Only
NANAIMO (250) 244-3655
www.harvestquilts.com

Get help with your quilt!



Let me help you get those unfinished quilts completed.

I have reasonable prices. Most edge to edge patterns are 1.5 cents per sq. in. Thread and optional trimming is included.

My return time is usually less than 2 weeks and my Gammel is a wonderful machine. I would be proud to work on your masterpieces.

BIRD HOUSE LONGARM QUILTING

461 Vancouver Ave.
Nanaimo BC V9S 4G4
(By Appointment)

Gail Stenberg
250-753-6613
birdhouse1@shaw.ca

UPCOMING QUILT SHOWS!

*Quilts Canada will be held in Halifax, Nova Scotia, May 30 to June 2, 2012. For more information visit www.canadianquilter.com or <http://quiltcanada2012.ca>.

*In conjunction with the CQA show in Halifax May 30–June 2, 2012, the virtual marketplace will offer special deals and discounts starting April 1st. Check out the site for the deal that's right for you and the coupon you'll need. CQA non-members welcome. Go to: www.canadianquilter.com/shopping/marketplace-information-search.php

*Fidalgo Island quilters: April 7-8 in Anacortes Washington. - *Parksville Guild quilt Show, May 18 -20

*Victoria quilters Guild show and sale May 4-6. For information go to victoriaquiltersguild.org.

These last 3 guilds have provided bookmarks; Please come up and collect one at break next guild meeting as they have all the info you need plus are artistic in their own right.

*Call for entry has been received for the Pacific West quilt show. Entry submissions deadline is April 20, 2012. Show dates are August 24-26, 2012, at the greater Tacoma Convention and Trade Center, Tacoma, Washington. See www.apwg.org or e-mail: contest@apwg.org.

NANAIMO QUILTERS GUILD

VOLUME 28 – ISSUE 8- APRIL 2012

www.islandquilters.ca



Huckleberry's Fabrics Inc.

1930 Ryan Road East

Comox, BC, V9M4C9

250-339-4059

1-877339-4059 Toll Free

e-mail :

huckleb@island.net



Software V6 and the CutWork Accessory and Software.

Enter the world of BERNINA
embroidery with the
BERNINA 580 E.

The new B 580 E will wow you with its simple, yet classic design, combined with superior function to set new standards. The B 580 E combination sewing/embroidery machine is compatible with the BERNINA Stitch Regulator, BERNINA Embroidery

Easter Egg Discount

Pick an egg and receive 15%-40% off
your purchase of any regularly priced
fabric, books, notions, & patterns

Wed. April 4/12-Monday, April 9/12

Check us out on Facebook:

www.facebook.com/HuckleberrysFabricsInc

Donation Quilts Committee Report

We have almost filled the need for wheelchair quilts for Nanaimo Travellers Lodge so thank-you to all who have helped achieve that goal.

I have since talked to staff at Dufferin Place and they are very excited at the prospect of receiving some wheelchair quilts from us as well. It is a nice size quilt to work on and a good way to use up scraps, so for those inclined to make another one or two, please do! At Dufferin they said they will use the quilts in house and also as lap quilts when they take the residents out about town.

Hospice is grateful for the quilts they have been given, as I mentioned last month. Two quilts were given to little boys who had lost a loved one and another to a 13 year old girl who, Shannon told me, left the meeting with shining eyes, tightly clutching her quilt. Their requirement continues to be lap size quilts which will be used primarily at the Palliative Care Unit, with some gifted to children and a few used at Hospice House. Cheery colours and prints are appreciated, especially by the young ones.

At the Donation Quilts table you will find that we have batting as usual and quite an assortment of backing fabric as well. Please stop by to have a look and see if there is something you can use in your donation quilts. We also have labels which we ask that you sew on before handing your quilt in. You can use one of our labels, which say on them "Made with care by the Nanaimo Quilters' Guild", or you can make your own label.

Thanks, and happy sewing!

Christine Hustins chustins@shaw.ca

NANAIMO QUILTERS GUILD

VOLUME 28 – ISSUE 8- APRIL 2012

www.islandquilters.ca

Retreat Committee

We are pleased to announce that as of the March meeting we have 34 members who have signed up and paid their deposit for the November retreat. We would like to urge members who have been thinking about going to retreat to sign up and get their deposit in, to hold a spot for them, so please phone or email us:

Dona-Mae- 250 740 0072 Email donamae1@telus.net

Robin Barker 250 390 2763 Email wrbarker@shaw.ca

We would like put a motion forward and voted on, at the April meeting.

The motion is regarding the method of registration for future retreats.

MOTION to read: That in order to continue having successful retreats, the motion of April 20, 2011 “to adopt a lottery style registration for the guild retreat” be replaced by a return to the previous system of sign-up, effective November, 2012.

Spring Class Schedule Available Now!
www.kismetquilts.com

- Long Arm Quilting Services
- Fabrics
- Notions
- Gifts

Kismet Quilts
5334 Argyle St., Port Alberni BC V9Y 1T8
250.723.6605 lyme@kismetquilts.com

NANAIMO CONCERT BAND

140th Anniversary

Spring Concert

Sunday, April 15, 2012 2:30 pm
Port Theatre \$15.00 per ticket

NANAIMO QUILTERS GUILD

VOLUME 28 – ISSUE 8- APRIL 2012

www.islandquilters.ca

CHALLENGE QUILT

This is a reminder to all of those who purchased the Challenge Quilt kits.

The finished quilt is to be turned in at the April meeting, please put it in a paper bag, or one that is not see-through. For the afternoon people please turn in to the Program table, I will be at the evening meeting to pick them all up.

Make sure all the necessary information, your name etc. is on the back of the quilt.

If you aren't quite finished by the April meeting you can get it to me by the end of the month, just call me to let me know that it is coming. Voting by the guild members will be done at the May meeting, as will the guessing of the song titles.

First, second and third place prizes will be given to the quilt makers and prizes will also be awarded to those who correctly guess the most song titles - Phillipa



Nanaimo Gift Baskets

Betty Wright

250-585-4355

Toll free 1-855-585-4355

www.nanaimogiftbaskets.ca



timeless treasure, robert kaufman, benartex
princess mirah, galaxy, hoffman, avlyn, riley blake
red rooster, fabrics that care, flannels, batiks, bolds
jelly rolls, layer cakes, fat quarters
patterns, kits



Free shipping
in Canada!



NANAIMO QUILTERS GUILD

VOLUME 28 – ISSUE 8- APRIL 2012

www.islandquilters.ca



The Cloth Castle

Your One Stop Sewing Shop

Victoria's Exclusive Husqvarna Viking and Singer Dealer
www.clothcastle.com
 786 Goldstream Ave., Victoria BC V9B 2X6 250-478-2112

The Cloth Castle your exclusive Vancouver Island Handi Quilter headquarters! Studio frames and sit down quilting machines.



Handi Quilter Studio Frame

Made of high-quality steel, the HQ Studio Frame is a robust, professional-grade table and frame system for your home studio.



Handi Quilter Sweet Sixteen Sit Down

If you love to free-motion machine quilt but struggle to fit your project in a small throat space, you're going to love the HQ Sweet Sixteen®. Sixteen inches of throat space gives you room to quilt even a king-size quilt. The smooth surface of the included table allows your project to glide under the needle. The powerful motor handles quilting with ease and stitches up to 1500 stitches-per-minute. Choose your three favourite top speed settings, on the easy-to-use color touch screen and let the machine remember them.

Come in for a demo of either of these great machines!

The Cloth Castle your one stop sewing and quilting shop on Vancouver Island.

www.clothcastle.com

Your One Stop Quilting and Sewing Machine Store on Vancouver Island!

Clip & Save Coupon!

Come in From
April 28- May 26

Save 30% off
Your Next Notion Purchase
(One Item All Brands)

Clip & Save Coupon!

Come in From
May 15 - June 1

Save 20% off
Your Next Book Purchase
(Off Regular Priced Books Only)

Hours: Sun. 12-4, Mon.-Sat. 9:30-5:30 (Open Fri. night if there is a class.) Closed Holidays and Sundays in July & August

#1-4047 Norwell Drive
Nanaimo, B.C. V9T 1Y6
1.250.756.2176
1.800.789.1730
Email: info@snipandstitch.com
www.snipandstitch.com

Husqvarna **JANOME**

On-Line Thread Candy Shoppe

Quality Threads & Essentials
FOR
**Quilters, Stitchers,
Appliqué, FibreArts**

www.CindysThreadworks.com

Cindy Scraba
Cinderella's Blog
Thread Talks/Workshops/Trunk Shows

cindysthreadworks@telus.net
1-(250)-738-0560
Vancouver Island, BC

NANAIMO QUILTERS GUILD

VOLUME 28 – ISSUE 8- APRIL 2012

www.islandquilters.ca

Program Committee

We had 'Thread Therapy' with Cindy Scraba during our March meeting, and found the selection is ever growing! There is potential to make adjustments on your machine to use many choices. Cindy can help us.

At our April meeting, Donna Morton from Snip and Stitch will show us the EQ7 quilt design software. Used by beginner to advanced quilter, this program helps you create your own blocks, choose colours and fabrics, and more!

Two workshops remain for this year. *Shears and Overlays* with Daphne Greig is Saturday April 14. *Take a Leaf* with Judy Farrow is Saturday and Sunday May 5&6. There is still room for you if you wish to participate.

Two motions were passed at the March meeting that will affect workshops next year. The first motion provides for non-members to be invited to participate in workshops, should the program committee find there is a need. To participate, they would pay 100% membership fee during the first half of the year, and 50% membership fee for a workshop during the second half of the year. The second motion affects guild workshop fees. The portion that a member will pay for a workshop will be \$40 for one day, and \$75 for two days.

The program committee has been busy getting the next year booked with many interesting guests. Fall workshops will include a design workshop with Ione MsCauley in October, and creating a wall hanging from a photo with Kathy Bush. Dates for these workshops will be provided in the next newsletter, and early registration will be available at the May meeting. Meanwhile, happy quilting!



THANK YOUS TO AND FROM THE GUILD

TRIBUTES TO THE GUILD FROM THE COMMUNITY

As you might imagine, there was lots of correspondence over the past 2 months, but in order to maximize time for Program without omitting important mail, I decided as secretary to give a synopsis in the Newsletter so that members could enjoy their kudos at leisure. Thank you notes were received from the NICU staff, the Prenatal Lunch Bunch, the Nanaimo Seniors Visiting Society, Nanaimo Travellers Lodge, the staff at Haven, and from Ladysmith Meals on Wheels. Nanaimo Meals on Wheels (who are, incidentally, requesting volunteer drivers if anyone is interested), also sent us a fulsome thank you note for our placemats. They were delighted, and especially at being able to offer matched sets to couples. The Nanaimo Hospice is using our quilts not only for patients but also for children and adolescents receiving grief counselling there.

Finally, a thank you was also received from the Nanaimo-Ladysmith schools foundation acknowledging receipt of our bursary in the amount of \$500. Nancy Price-Munn

A THANK YOU TO BOB LLOYD FROM THE GUILD

As secretary I write many notes: get well, bereavement, thinking of you... all aimed at connecting with our members who are absent, and sometimes to connect with their families. I rarely read out or publish them, but when Bob Lloyd donated all of Sidney's fabric to the guild, it seemed appropriate to make an exception. Here is the message that we sent:

Dear Bob,

Margaret Carmichael called me this evening with news of your thoughtful donation of fabric in Sidney's memory.

There are a number of projects that will benefit from your generosity. We will sew in Sidney's name at the Quilting Bee in January (quilts destined for Haven Society), create quilts for the Donation Quilts committee, who donate to numerous individuals and charities in need, and for any number of other appropriate projects Sidney would have appreciated and approved of.

As we work we will remember her, and all our lives will be the richer for it.

With affection and gratitude,

NANAIMO QUILTERS GUILD

VOLUME 28 – ISSUE 8- APRIL 2012

www.islandquilters.ca

Secretarial Position Job Discriptions

(Nancy Price-Munn, Buelah Friesen, Val Ansell)

The Guild has 3 secretarial positions: afternoon secretary and co-secretary, and evening secretary. This May there will be an opening for the positions of all 3. I (Nancy) have loved being secretary, despite the fact I am a two-fingered typist. I feel I really came to understand how our guild works, the roles of the various directors and committees, as well as a real sense of our evolution over time. After 2 years, I feel it is time for me to try something new, and so with mixed feelings, I am giving up this post.

The job of the afternoon secretary is to take minutes at the monthly executive meetings, and at the monthly guild meetings, where she also reads the correspondence. The latter minutes (very brief) go in to the Newsletter. She is also in charge of meeting timelines for various renewals (postal box, C.Q.A. Membership, etc.).

The job of the evening Guild secretary is to read the correspondence, record attendance and results of votes on any motions, as well convey any important items not on the afternoon agenda that need addressing.

I strongly recommend that for afternoons there be a secretary and co-secretary, as we are at an age where getting away from time to time is important and illnesses do occur. The co-secretary can either be limited to backup for absences, share attendance or attend all meetings but rotate writing up the minutes. You can work this out. For 2 years, Buelah attended all meetings, and was also a critical backup for my absences; her participation made things run smoothly and efficiently.

Please email me at pricemunn@shaw.ca, if you are interested or just want more information. Nancy Price-Munn



GUILD MEETING 21ST OF MARCH, 2012

The meeting was called to order at 1 PM by co-president Sherry Drebnicki. Sherry announced that long time member Buelah Friesen passed away March 7. A Tea will be given in her honour (see details in the Newsletter).

Hospitality announced 6 visitors today. Lise Scalos gave the treasurer's report. We have a balance of \$23,608.91. Nancy Price-Munn reported on the many thank you notes received from the community and also read a thank you note to Bob Lloyd for the material donated to the guild in honor of Sidney. Committee reports were given by Val Ansell (Block-of-the-Month), Lillian Charron (Quilt Show), Membership (about early membership renewal) and Retreat (Dona-Mae Bauer). See the Newsletter for committee report details. Past Pres. Norma Franks announced 3 binders will be kept in the library (Constitution, Handbook, copywriting information). She is also sending out information to each member regarding nominations. Sandra Hreno is stepping down as head of Newsletter. Guild pins can be purchased from the historians for \$3.

Program Committee brought forth two motions:

It was moved by Leslie Millward and seconded by Val Ursulak *that workshop registration be open to non-guild members at the discretion of the Program Committee. In addition to the workshop cost, non-members would be required to pay the regular guild membership fee and become a member (100% of the current membership fee for the Fall workshops and 50% of the current membership fee for the Spring workshops).* Carried.

It was moved by Leslie Millward and seconded by Lillian Charron *that beginning September 2012 the fee schedule would be as follows: \$40 for a one-day workshop and \$70 for a 2-day workshop.* Carried.

Shirley Herritt and Fran Nicklom volunteered to represent the guild at the Appreciation Tea hosted by the Nanaimo-Ladysmith Schools Foundation April 12, 130-3:30 PM. Cindy Scraba presented "Thread Therapy" for the program part of the meeting. Raffles and Show and Share completed the afternoon. The meeting was adjourned at 3:30 PM.

Nancy Price-Munn, Secretary

NANAIMO QUILTERS GUILD

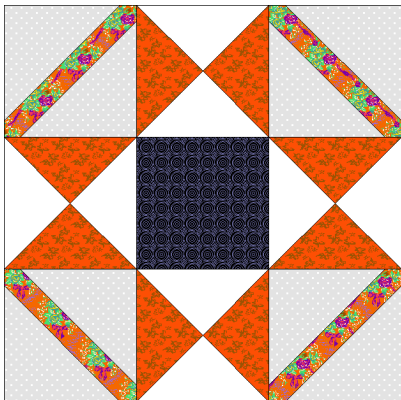
VOLUME 28 – ISSUE 8- APRIL 2012

www.islandquilters.ca

May Block of the Month

Thanks to everyone who participated in the March draw. The winner was Janet Knecht who won six pretty blocks for a lap quilt.

This month's block is an Ohio Star variation made with quarter-square triangles and inset strips at each corner which create a trellis effect. Use a scant $\frac{1}{4}$ " seam and trim each unit to $4\frac{1}{2}$ " after constructing. Unfinished block is $12\frac{1}{2}$ " square. Accuracy is important.



Trellised Star

Fabric Choices and Cutting:

Choose the two most different reds in your stash (one a print, if possible), a pale grey, a tone on tone white (preferably not cream) and a dark black and grey print or plain black for the centre square.

Corner units:

Pale grey 4: $4\frac{1}{2}$ " x $4\frac{1}{2}$ "

Red print: 4: $1\frac{1}{8}$ " x $6\frac{1}{2}$ "

Quarter-square triangles:

White 2: $5\frac{1}{4}$ " x $5\frac{1}{4}$ "

2nd Red 2: $5\frac{1}{4}$ " x $5\frac{1}{4}$ "

Centre:

Black 1: $4\frac{1}{2}$ " x $4\frac{1}{2}$ "

Construction:

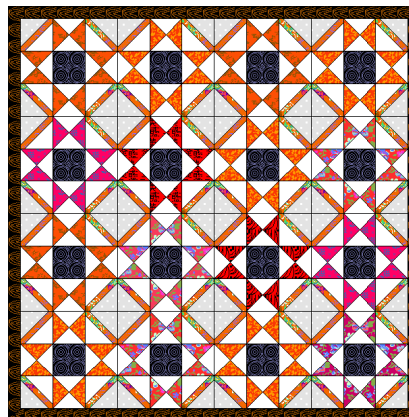
To make the 4 corner units, cut the four pale grey squares in half on the diagonal. Centre the long side of one grey triangle on one red $6\frac{1}{2}$ " strip, right sides together, and sew. Centre another grey triangle on the other side and sew. Repeat for the other 3 units. Press to red and trim to $4\frac{1}{2}$ " square. Use the diagonal line on your square ruler as a guide.

Now make the quarter-square units. Mark the diagonal on the back of the white $4\frac{1}{2}$ " squares. Place right sides together on top of the two second red $4\frac{1}{2}$ " squares. Sew a scant $\frac{1}{4}$ " seam on either side of the diagonal line. Cut along the diagonal across the seams. Then cut between the seams. You will have four units of two triangles each. Lay the units out so that the red triangles lie opposite the white triangles. Sew together being careful to nest the seams at the centre. Trim to $4\frac{1}{2}$ " squares. Be sure to keep the seam through each corner – use the diagonal line on your square ruler to keep the seams in the right place.

Lay out the units according to the diagram and assemble. Be careful with the orientation of the corner strips.

Sandra and I have had a wonderful time designing these blocks for you for the past four years. We think it is time for a fresh mind to take over the job. If you and a friend or your satellite group would like to give it a whirl, please volunteer at the business meeting in May for the job. We would be glad to pass on any help we can to the new committee.

If you have any questions, suggestions or problems, please call me at 250-758-1185 or e-mail me at thomasite@gmail.com. Wishing you joy in quilting, Val Ansell and Sandra Radley.



NANAIMO QUILTERS GUILD

VOLUME 28 – ISSUE 8- APRIL 2012

www.islandquilters.ca

DID YOU KNOW? (NQG Historians)

“Mystery Fabric Draw” - Nanaimo-Ladysmith School Foundation Award

(The Guild calls this a “Bursary” but it is an “Award”)

The Mystery Fabric Draw is a separate monthly draw the Guild holds, and the monies raised helps fund a \$500.00 Award that is presented each year to a deserving student, in the textile department, who is going on to further education in fiber arts or textile design.

The first draw was held in January 2001. A one-metre piece of fabric was wrapped up (hence mystery) and tickets were sold for \$1.00 each. Approximately \$50.00 was collected that night and Sandra Radley was the winner.

Over the next few months the monies collected from the draw were banked and in the spring of 2002 enough funds had been raised for the Award. The Guild sets the criteria for the Award but allows the Nanaimo-Ladysmith School Foundation to select the recipient.

The first recipient to receive the “Nanaimo Quilters’ Guild Award” was Alaina Bert from the Cedar Secondary School.

Since then, the Guild holds two draws a month, one at the afternoon meeting, and a second draw at the evening meeting. Tickets still cost only \$1.00.

Thanks to the membership for buying tickets and for your support.

Quilting in the Trees

March 2012

Dear Non Victoria Guild Members:

It is with great pleasure we invite you to attend "Quilting in the Trees" **June 7– 10, 2012**. Please join us for two or three days of quilting away from your busy lives. It will be the Guild's 26th annual quilting weekend held at Pearson College and everyone who has attended in the past will agree it is a memorable experience.

Located in Metchosin, Pearson College provides a rustic setting so the dress code is casual. We can use all the facilities, including the swimming pool and exercise equipment. Accommodation is dorm-style with some bunk beds and the campus is non-smoking except for a small patio area outside of the cafeteria. The campus is also a Nut-Free Zone. Pearson is not a hotel, so occasional 'oversights' are considered to be part of the fun.

We are offering one, two and three day workshops. Students attending 3 days arrive Thursday, June 7th. All others arrive Friday June 8th. In addition to the workshops there will be a silent auction, a merchant's mall, a students' mini mall, a raffle for the next year's tuition to Quilting in the Trees and a lecture on Saturday night.

NANAIMO QUILTERS GUILD

VOLUME 28 – ISSUE 8- APRIL 2012

www.islandquilters.ca

New registration option

The committee is offering a second option for registration for **Quilting in the Trees**. The option is to take part of the day and evening events but you do not have to sleep over. It will be your responsibility to arrive on time for the start of each day's class. The cost has been added to the attached form for you (in red). Arrival times are the same as above.

We hope you will join us for another great weekend. Questions? Call Carol Stewart at (250) 383-4965 or Mavis Reynolds at (250) 592-6002.

STUDENTS' MINI MALL (Friday Evening)

Students wishing to sell their own hand-made products which are not necessarily quilt related; such as jewelry, dyed fabric or cards can do so Friday night in the cafeteria after our entertainment. You will set up your table, provide your own means of making change and ensure the cafeteria is in order at the end. Please indicate on the registration form if you wish to participate, teachers can also be part of this.

REGISTRATION

The registration form is attached and can be mailed any time, but it is appreciated if they arrive by April 1, 2012 when class assignments begin. Make cheques **payable to the Victoria Quilters' Guild**. Send your **cheque**, the **registration form** and a **stamped, self-addressed envelope** large enough for us to send you 3 or 4 pages including your supply list(s). Please remember to put a stamp on your return envelope. For those who have an email address, we will be sending information this way as well as having the supply lists on the web in April.

INSTRUCTORS AND THEIR CLASSES

Coreen Zerr – Under the Sea

3 days – Friday, Saturday and Sunday

Beginners+

Make an underwater scene using fabrics and sheers as well as embellishments of yarns, etc. Learn my easy way

to raw edge appliqué and zigzag free motion work and to create 3-D objects all out of thread with no HOOP!

Just about anything you wish to include to depict an ocean floor is allowed. Sewing machine required.

Susan Purney-Mark – Resists, Rubbings and Repetition with Soy Wax

3 days – Friday, Saturday and Sunday

Beginners+

Learn how to create exciting designs with thickened dyes and soy wax. Students will experiment with painted batik, soy wax crayons and screen printing while learning design principles, mark making and colour theory. Soy wax is biodegradable and easy to remove with washing! Students will make variety of samples which can be used for further exploration in quilting and stitch. Kit fee

Susan Teece –Textile Trees en plein air

1 day – Friday

Beginners+

Just like the water colour artists who are inspired by natural scenery, we will spend time outside, enjoying the landscape and observing trees around Pearson College. The sample wall hanging has trees and shows some possibilities. You have a choice of cedar, fir or arbutus. Various techniques for achieving texture and shadows will be discussed. Using a stash of fabric pieces, you will create the tree truck you choice. You may use a variety of fabrics (not just cotton), threads, machine stitches, beads, metallics and yarns. A demonstration of easy background techniques will show you how to complete your wall hanging. Patterns for west coast trees and foliage shapes are provided.

NANAIMO QUILTERS GUILD

VOLUME 28 – ISSUE 8- APRIL 2012

www.islandquilters.ca

Cathy Miller – Mock Mola

1 day – Saturday

Beginners+

The possibilities of this simple technique are only limited by your imagination. Using your most precious bright batiks or hand-dyes (the ones you can't bear to cut into) a black overlay, and free motion quilting, you will mostly complete your wall hanging during class and take it home for binding. You will learn the basics of design to create your one-of-a-kind piece. No fusible required. Warning: this technique is addictive! Students are encouraged to bring their own design ideas. A Google search for images relating to "positive negative art", "black and white art", "notan", "silhouette art" or "scherenschnitte" will result in thousands of ideas for this technique. I also have pictures of many students' work on my website: www.singingquilter.com. Follow the links to "Classes" and "Students' Work". Discussion of design basics: line, shape, value, positive/negative space, balance.

Lisa Girard – Wheels

2days – Saturday and Sunday

Beginners+

This project is ideal for the use of fat quarters. The whole background is pieced with two different methods. The "wheels" are appliquéd to the background using either a straight stitch or any fancy stitch the students' sewing machine will do. Finish off the quilt by beading or iron-on crystals.

Do Your Own Thing

Friday, Saturday, and/or Sunday The common rooms in our dorms and some classrooms will be available for you to set up your sewing machine and lamp so you can work on your own projects. The Max Bell stage can be used for pinning small/large quilts.